

vTrace User Manual v0.2

=====

Based on vTrace version 3.7.3.1

vTrace is a free traceroute application. This manual documents vTrace.

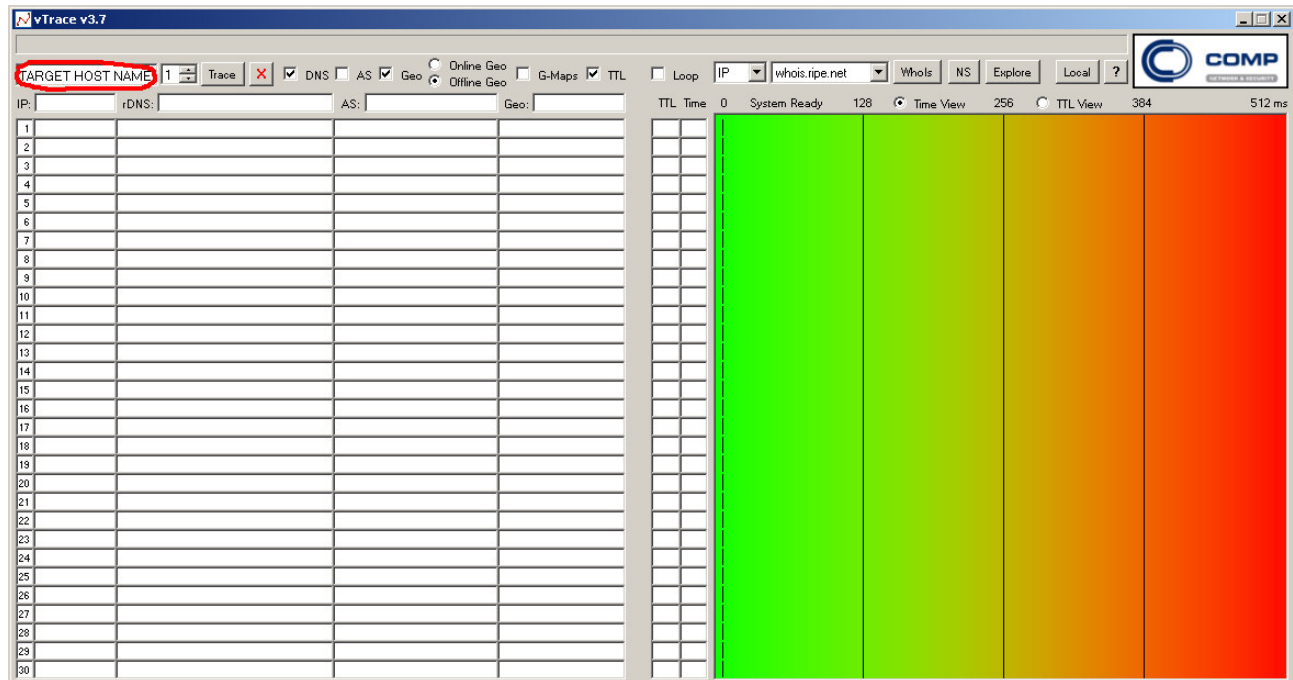
This manual is copyright 2009 Arkadiusz Nowicki. All rights reserved. You may distribute this documentation under the vTrace licence.

Chapter 1: Introduction to vTrace

vTrace allows you to get a lot of information about target host in few clicks in really short time :-)

Chapter 2: TraceRoute module

In this (front) panel you can traceroute a host. Enter its name or IP address in marked field and click "Trace". By "Stop" button you can disturb tracing in any time.



For better result you can use this checkboxes:

- DNS - enable/disable name resolving of route hosts
- AS - enable/disable AS number checking
- GEO - enable/disable geographical localization
 - Online Geo - vTrace will use a Webservice for geo
 - Offline Geo - vTrace will use local database for geo
- G-Maps - vTrace will use Google Map for visualization of the route
- TTL - enable/disable TTL checking

- Loop - Looping traceroute procedure

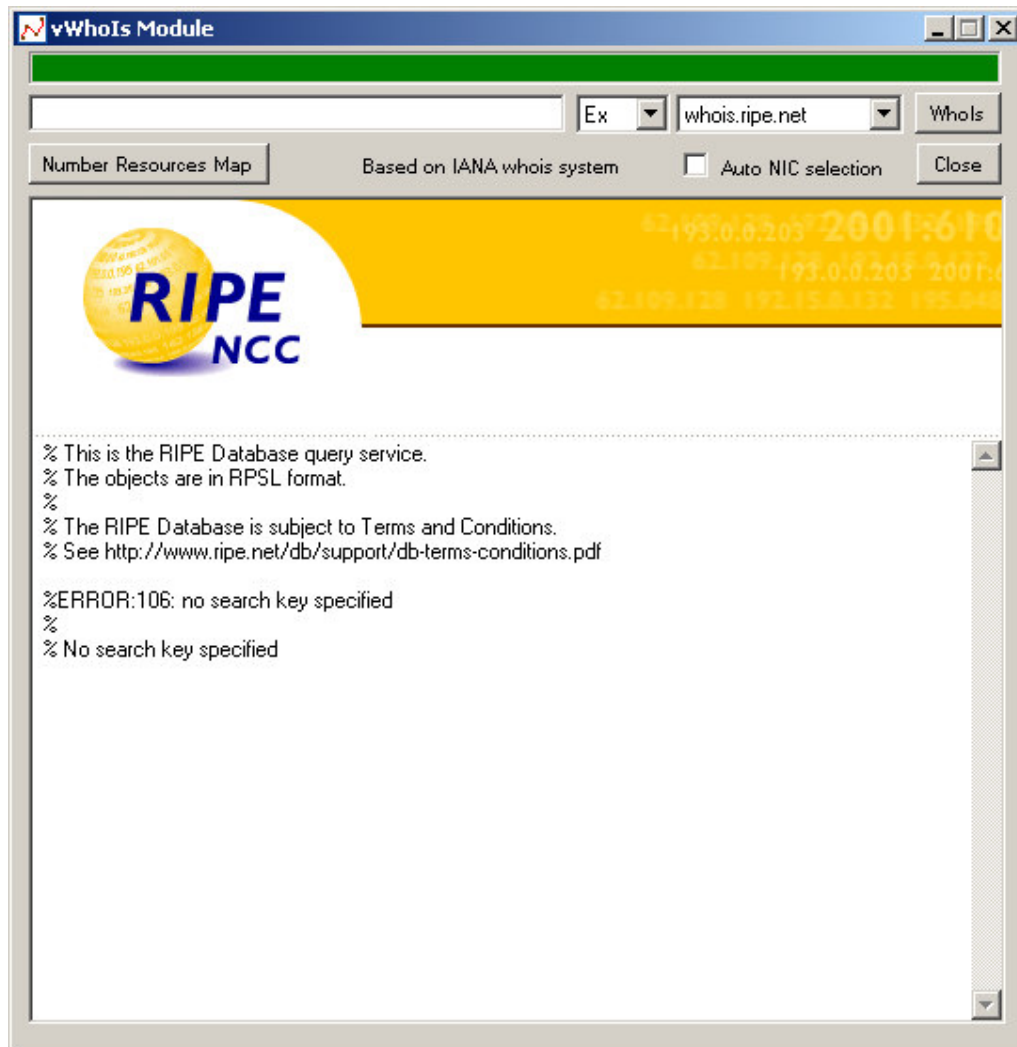
Chapter 3: Other modules

You can also use few extension module by clicking on this bar:



Chapter 4: Whois modules

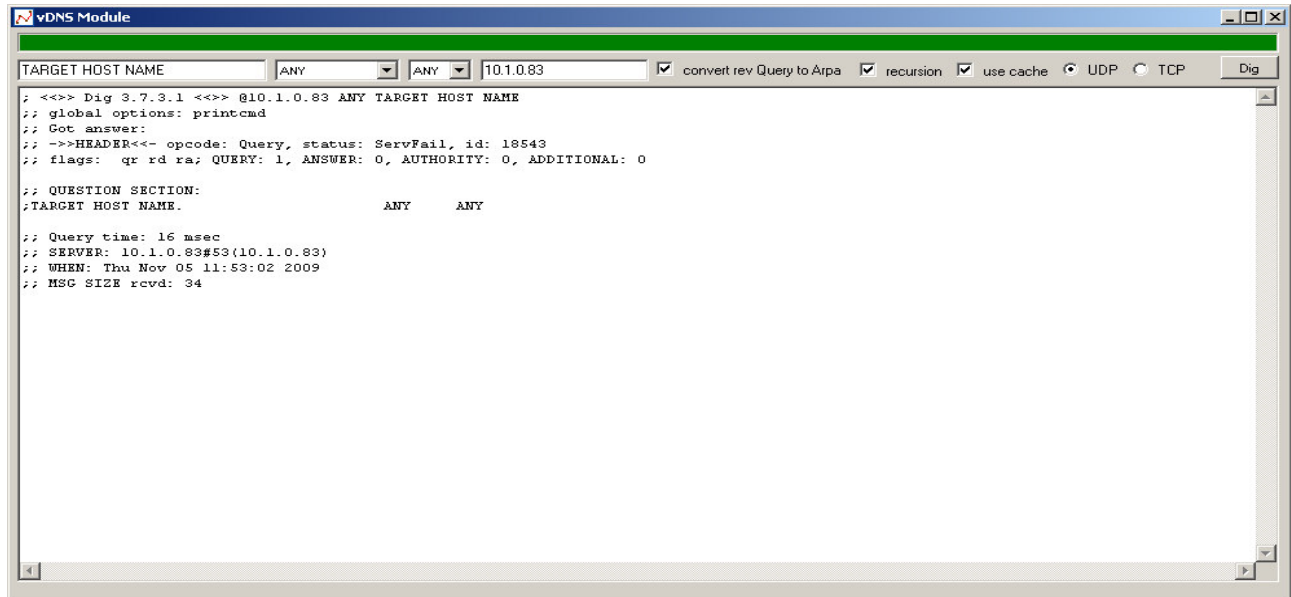
In this module you can check IANA information about target host...



Tip: In address field you can also enter AS number.

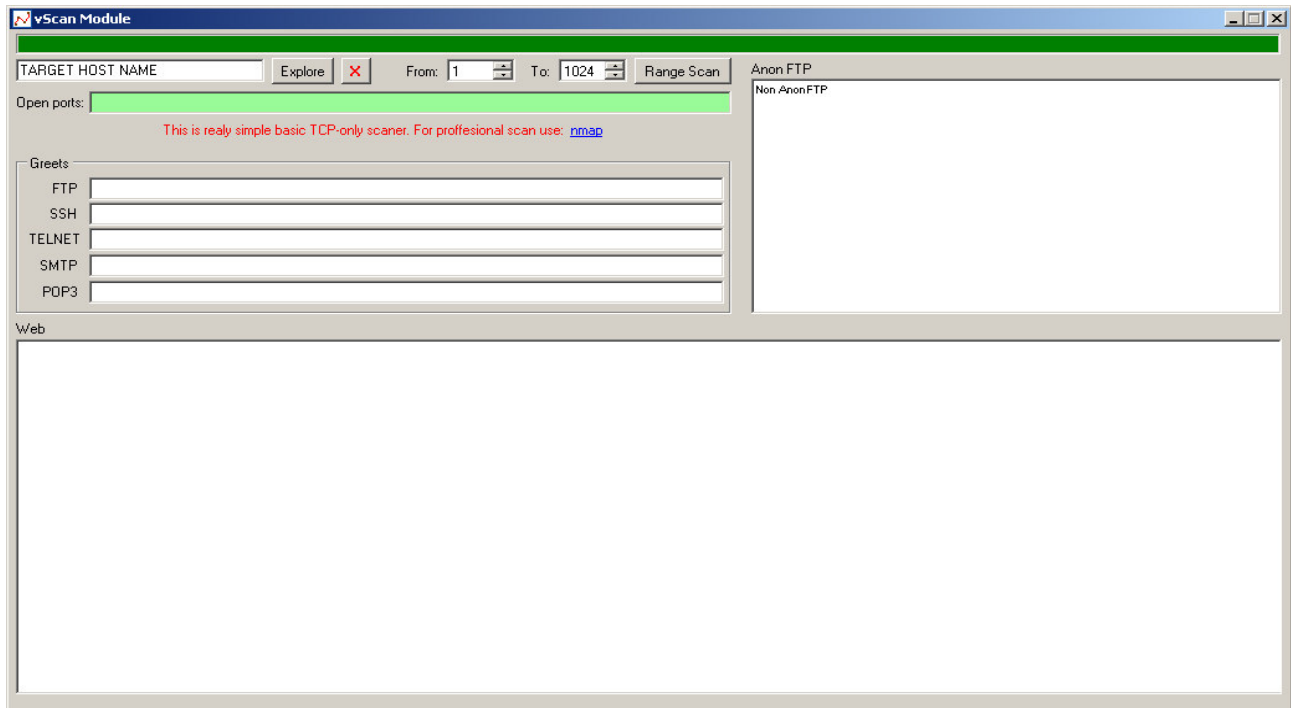
Chapter 5: DNS modules

In this module you can resolve DNS addresses



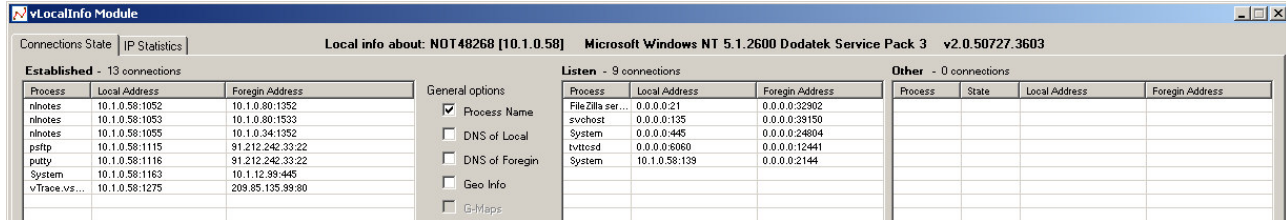
Chapter 6: Explore module

In this module you can scan target host. This is very simple scanner, so do not use it for professional usage. It scan only TCP ports.

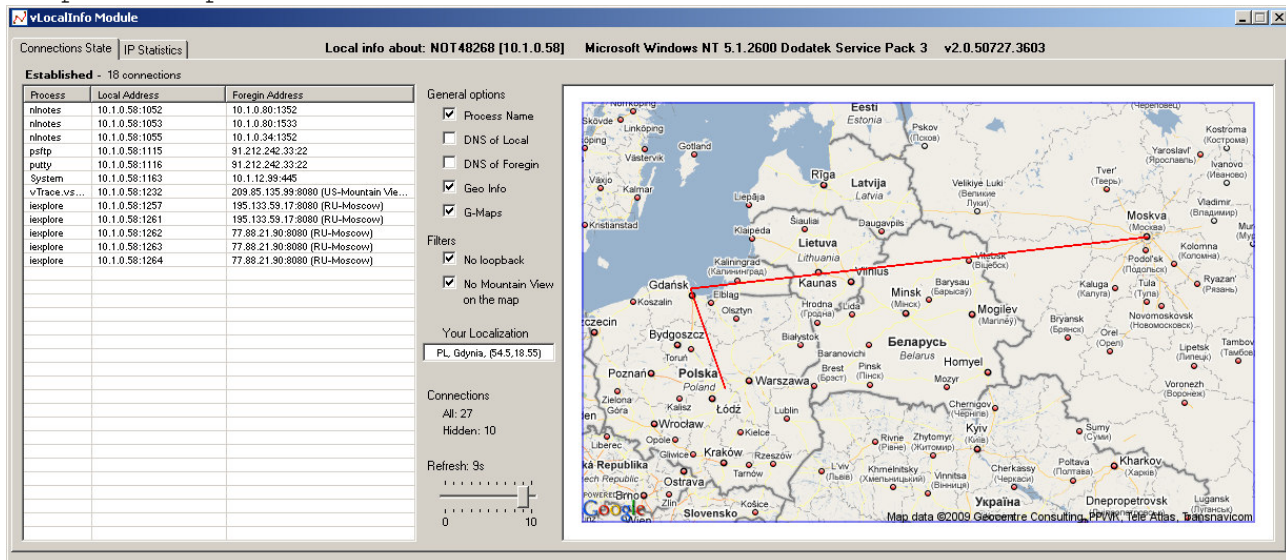


Chapter 6: Local module

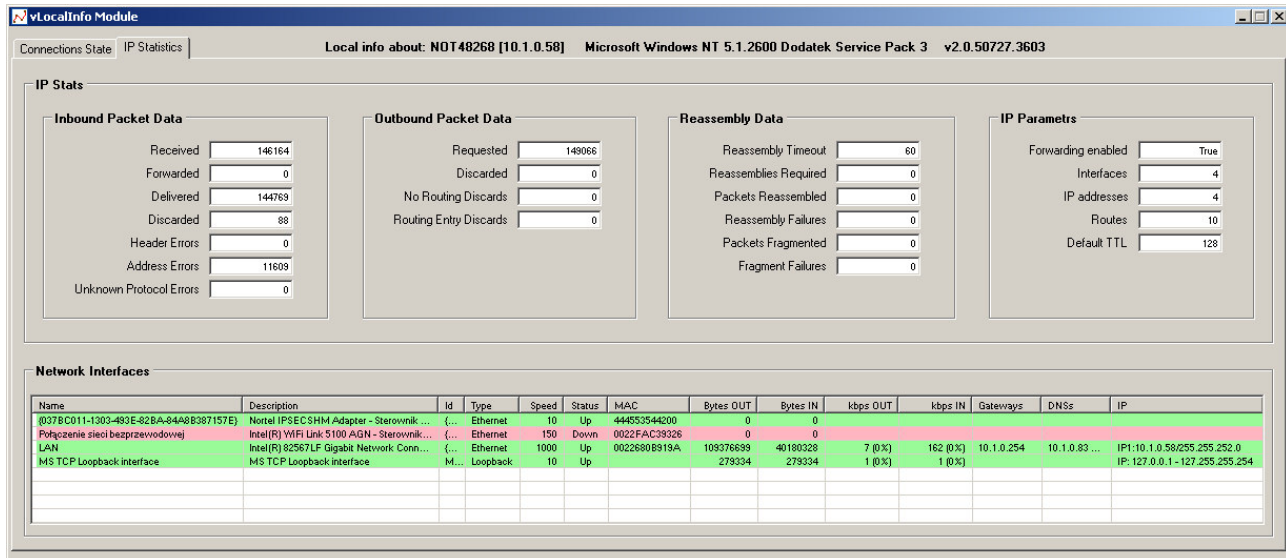
"Connection State" tab is netstat-like module, but you can also use G-Maps for visualization of established connections. This module helps you to trace, identify and monitor your network activity on world map. You can trace any website or IP address on your map. Built on .NET technology this module uses fast and reliable approach in detecting hostnames, IP addresses, domain names. While many IP lookup tools only provide network provider locations, this module uses unique IP location engine to provide a much higher level of accuracy by identifying the actual physical city and country location of servers and routers.



Sample G-maps view



"IP Statistic" tab show you few information about your system network status



Chapter 7: Upgrade

The "?" button run "About Form". In this form you can check vTrace version and upgrade it when needed.



You can also download fresh GeoIP database in this form.

THE END